



The Powersys ZPA 1400 is an excellent example of the smart and simple design of our printer applicator range. Based on the proven base-module of the ZPA 1100, the Powersys ZPA 1400 is the ideal solution to apply labels on the top of any product or case passing on your conveyor belt. Its solid construction perfectly fits in the production line and allows easy access to all components in case of (pro-active) maintenance to secure maximum operational availability.

Features

- **Stable applicator-stand for reliable topside application**
- **Flexible solution with empowering options**
- Own Powersys R&D product
- Easy changeable print engine
- 10/100 Ethernet or wireless connection (optional)
- Label width up to 168 mm
- Print resolution up to 600 dpi
- Good print quality on normal and on thermal labels
- Foil rolls up to 900 meter means less production stops



Innovate

Integrate

Improve



Zetes 3i P&A Solutions are built around our own Powersys Printer Applicators. The combination of these intelligent and highly robust machines with the integration expertise of Zetes is your guarantee for making the smart choice!

Technical specifications ZPA 1400

- Applicator to apply the label on the top of the product, stroke length 250 mm
- Vertical stand (top labelling) with height adjustable feet (50 mm). Application height is fixed
- Outer diameter control foil, error signal on potential free contact
- Optical sensor for product detection
- Siemens S7-200 PLC

Standard options (depending on print engine)

- Print engine, all brands available
- Barcode verifier type Sick CLV 420 including cable
- Profibus connection (S7 200 - EM277 slave)
- Light tower, 3 colors
- Stroke length 500 mm
- Outer diameter control of label roll via photocell including reflector
- Applicator home signal on potential free contact
- End of stroke signal on potential free contact
- On / Off button barcode scanner
- Button to reprint last label
- Label on applicator signal on potential free contact
- Dancer arm label unwind
- Siemens TD-200 display to control and change machine settings
- Potentiometer with lock, to start delay
- Fine position regulator with continuous screw. Height adjustment. Range 300mm
- Swivel castors with brake

Other options are possible after discussion.

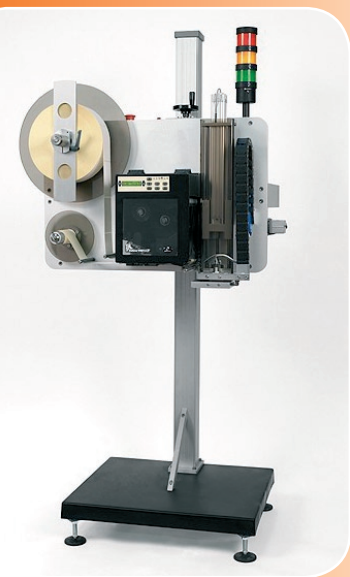
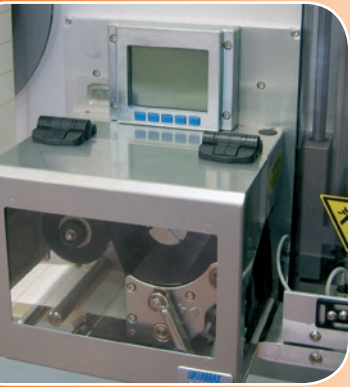
Capacity

- Based on a label length of 100 x 100mm
- Maximum capacity: 35 applications per minute

Various

- Diameter label roll : up to 300 mm
- Air pressure : clean compressed air 6 bar, consumption approx. 15 L/min
- L x W x H : 776 x 510 x 500 mm (H= including print engine)
- Weight : 65 kg excluding print engine
- Power supply : 230V-50 Hz; 5A
- Protection class : IP 41

For technical information about the print engines, see the specific documentation.



Zetes
Straatsburgstraat 3
B-1130 Brussel
pa@zetes.com